

**KDC+™ BUNDED COSHH  
CHEMICAL STORAGE CONTAINERS**

# BUILT TO LAST

With a fully galvanised finish, banded steel base and ventilation panels built-in as standard, our stores offer an extremely safe way of storing chemicals and other hazardous goods on industrial, commercial or agricultural premises.

Available in widths of up to four metres, the KDC™ storage containers can easily accommodate large amounts of hazardous substances, such as flammable liquids and oils, fuels, pesticides, or other volatile chemical compounds. A leak-proof, banded steel base with removable grid flooring contains spillages for an easy clean-up. Dual outward-opening doors are also fitted for convenient access at all times.



AVAILABLE IN 2M, 3M AND 4M WIDTHS

**CONTACT US TO BECOME A PARTNER TODAY.**

VENTILATION SYSTEM

INTEGRATED GUTTER



**SOLMHA**

VISIT US ONLINE TODAY  
[WWW.SOLMHA.COM](http://WWW.SOLMHA.COM)

**KDC+™ BUNDED COSHH  
CHEMICAL STORAGE CONTAINERS**

# SECURITY AND CONVENIENCE

## SPECIFICATION

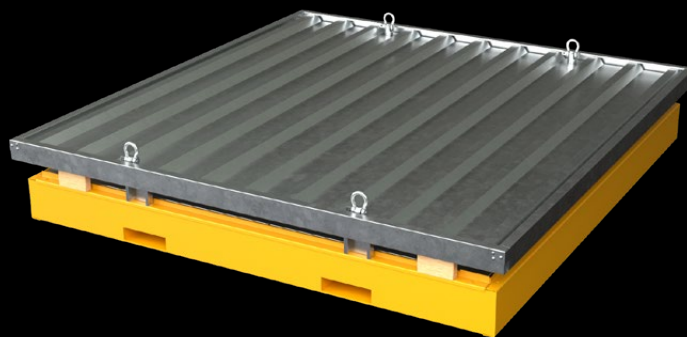
- Compliant with UK COSHH regulations for hazardous storage
- Available in widths of 2m, 3m or 4m
- 10-year anti-corrosion guarantee
- Fully galvanised steel construction with powder-coated finish
- Delivered flat-packed
- All panels can be manoeuvred by hand except the banded floor
- No special tools or skills required during assembly
- Roof, doors and base powder-coated in yellow (RAL 1003)

## KEY FEATURES

- Leak-proof, banded steel base with removable grid flooring
- Built-in ventilation panels help prevent build-up of hazardous fumes
- Dual outward-opening doors for easy access
- Twin (top and bottom) UK Locksmith Association approved door locks with 2 x spare keys provided as standard
- Heavy-duty twin front door hinges
- 1654mm wide twin door opening
- Integrated gutter system channels rainwater
- Integrated forklift pockets for safe and easy transportation, loading and unloading (194mm x 70mm at 850mm centres)
- Can be lifted into position using the lifting eyes (self-weight only)

## OPTIONS

- Banded shelving



**ARRIVES FLAT-PACKED**



**CONTACT US TO BECOME A PARTNER TODAY.**

**SOLMHA**

**VISIT US ONLINE TODAY  
WWW.SOLMHA.COM**